

# Franklyn James



24 Marsh Wall,

London, E14 9EG

Asking Price £695,000

This stunning two-bedroom apartment is situated on the thirty-fourth floor of the prestigious Landmark East Tower, offering breathtaking panoramic views towards The City and Canary Wharf.

Benefitting from a 24-hour concierge service and a fully equipped residents' gym. Ideally located just moments from Canary Wharf station and Heron Quay DLR, the property offers excellent transport links and easy access to a wide range of shops, restaurants, and amenities.

The property features a bright dual-aspect open-plan reception and kitchen area with floor-to-ceiling windows and sliding doors leading to a private balcony. The spacious principal bedroom benefits from fitted wardrobes and a stylish en-suite shower room, while the second generous double bedroom is served by a luxurious family bathroom. There is also ample storage throughout the apartment.

- Located on the 34th floor
- Dual aspect views
- Two bedrooms and two bathrooms
- Private balcony
- 24 hour concierge
- Resident's gym
- Walking distance to Canary Wharf
- Close to amenities and shopping

View

Please contact our Limehouse Sales Office on 02077911777 if you wish to arrange a viewing appointment for this property or require further information.



2



2

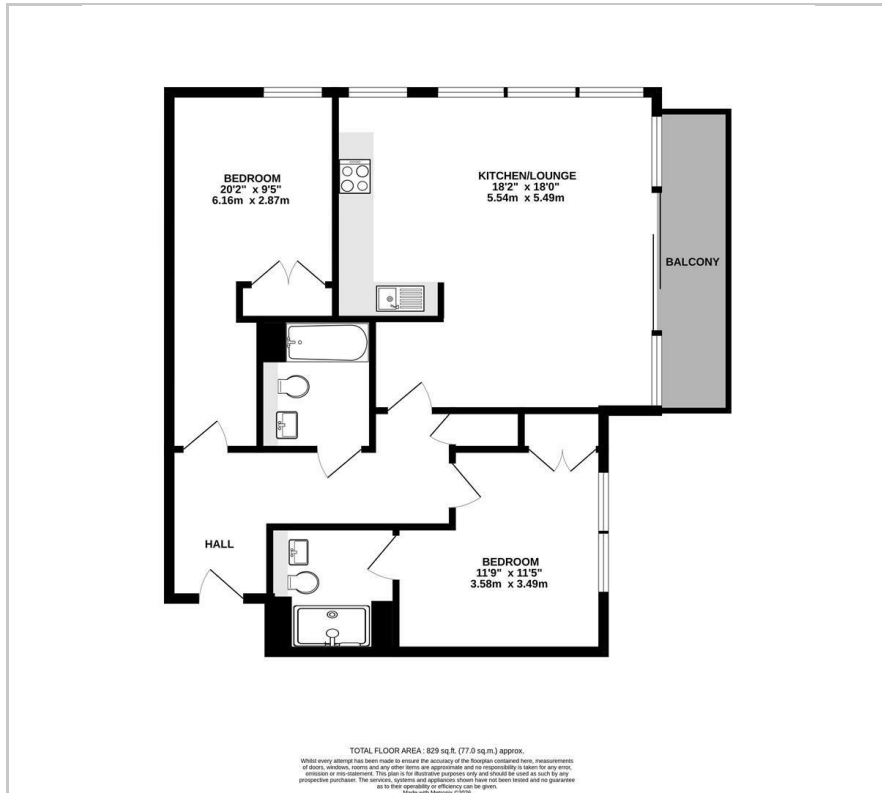


1



B

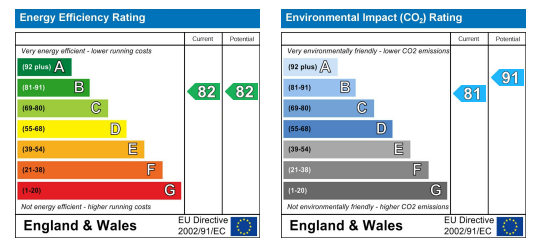
## Floor Plan



## Area Map



## Energy Efficiency Graph



These particulars, whilst believed to be accurate are set out as a general outline only for guidance and do not constitute any part of an offer or contract. Intending purchasers should not rely on them as statements of representation of fact, but must satisfy themselves by inspection or otherwise as to their accuracy. No person in this firm's employment has the authority to make or give any representation or warranty in respect of the property.